

EXTEND THE LIFE OF YOUR TIRES!

Specifications

Range:
5-99 PSI/0.35-6.85 BAR
Resolution: 0.5 PSI/0.05 BAR
Accuracy: +/- 1% + 1 LSD
Power:
2 CR2032 Lithium batteries included (Replaceable)

Contents

Tire gauge, instruction manual and two Lithium batteries

Warranty and Service

Measurement Ltd., Inc warrants this gauge against defects in material of workmanship for a period of five (5) years from the date of purchase and agrees to replace it free of charge. This warranty does not cover damage resulting from misuse or abuse of the product. Should your gauge require service, you may send it back to Measurement Ltd., Inc for repair or replacement.

Patent Pending

US Patent Number:
D526,589



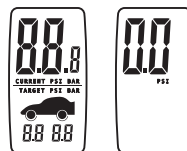
Made in China

Operation Instructions Digital Tire Gauge

Remove battery tab before 1st use.
Pull tab to remove, gauge is now ready for use.

(A) Pressure measurement without Preset Target

1. Press Set, all digits light up then "0.0" appears. Default unit of measure is PSI.



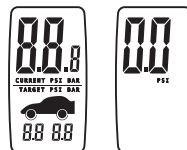
2. Push nozzle of gauge on to tire valve.
3. Hold gauge on valve stem until the pressure reading is displayed and locked.



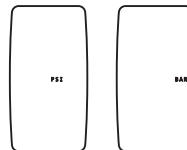
4. Promptly remove gauge from the valve stem.
5. The pressure reading stays on the display for 10 seconds.
6. Display goes to 0.0.
7. Gauge turns off in 10 seconds after 0.0 appears.

(B) Target Setting

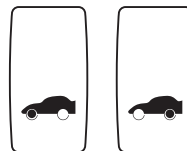
1. Press Set to power on the gauge, all digits light up then "0.0" appears on the display.



2. Press and hold Set for 3 seconds to enter setting mode. The unit "PSI" or "BAR" appears and blinks. Press up or down to switch between PSI and BAR. Then press Set to confirm.



3. Default front tire or rear tire lights up and blinks. Press up/down to switch between front and rear and press Set to confirm.



4. Press up/down to change target number and press Set to confirm.

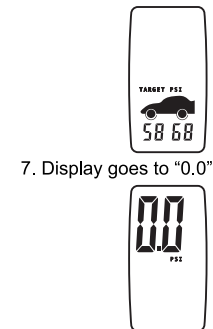


5. The second tire lights up, Press up/down to change the target number and press Set to confirm.



Note: For target numbers, refer to vehicle manufacturer's suggested tire pressure levels as listed in vehicle owner's manual.

6. Unit of measurement and target numbers for both tires light up and stay for about 2 seconds

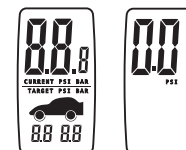


7. Display goes to "0.0"

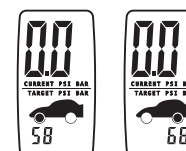
Note: The target numbers are only reminders of the vehicle manufacturer's suggested tire pressure levels. They cannot be used to test for or indicate actual pressure in tires.

(C) Pressure Measurement with Preset Target

1. Press Set to power on the Gauge, all digits light up and the "0.0" appears on the display.



2. Press up/down to choose between front and rear tires.



3. Push nozzle of gauge on to tire valve.

4. Hold gauge on valve stem until the pressure reading is display and locked.



5. Promptly remove gauge from valve stem.
6. The actual pressure reading and target number will stay on the display for 10 seconds.
7. Display goes to 0.0.
8. Gauge turns off in 10 seconds after 0.0 appears.
9. Before gauge turns off, follow instructions Section (A) and (C) to measure pressure of the second tire.

D) White LED Flashlight

To turn on the light just press and hold the light button. To turn off the light, release the light button.

Note: Do Not Mix Old and New Batteries. Do not Mix Alkaline, Standard (Carbon-Zinc), Or Rechargeable (Nickel Cadmium) Batteries.

By checking your tires once a week, the battery life is about 6 months before replacement may be required.

E) Replacing the batteries

To replace the batteries, unscrew the battery cover and remove the old batteries, insert new batteries (two CR2032 or equivalent). Observe carefully the correct polarity before installing the new batteries. Replace the battery compartment cover and screw tightly.

Warranty and service

Measurement Ltd., Inc warrants this gauge against defects in material of workmanship for a period of five (5) years from the date of purchase and agrees to replace it free of charge. This warranty does not cover damage resulting from misuse or abuse of the product. Should your gauge require service, you may send it back to Measurement Ltd., Inc for repair or replacement.

Our authorized service center address:
11751 Rock Landing Drive Suite H-7
Newport News, Virginia 23606 U.S.A.
Attn: Customer Service



Measurement Ltd., Inc.
www.measurement-ltd.com

Our authorized service center address:
11751 Rock Landing Drive Suite H-7
Newport News, Virginia 23606 U.S.A.
Attn: Customer Service